

## ESC / Heater of NTK Ceratec

- ◆ **For your first applications**
- ◆ **For solutions of your problems and modifications**

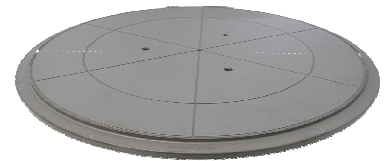
**Our special staffs and engineers politely respond you !**

### Feature of NTK Ceratec's ESC / Heater

- ◇ **Designing / Producing with answering the your specification**
- ◇ **Low particle technologies by our special processing and cleaning**
- ◇ **Selectable surface shape obtained on latest polishing techniques**
- ◇ **Entire support included the refabrication of products with impaired functions**

### AlN ESC / Heater

- Sufficient chucking force in wide range with controlling the volume resistance of AlN
- Excellent temperature uniformity without designing constraints
- No temporal change by the plane heater elements



AlN ESC

### Al<sub>2</sub>O<sub>3</sub> ESC

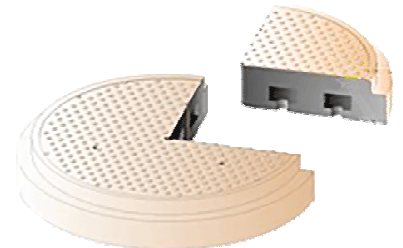
- Low metal contamination with high purity raw material
- High plasma resistance in halogen gas plasma
- High precision shape processing



Al<sub>2</sub>O<sub>3</sub> ESC with Al pedestal

### Al<sub>2</sub>O<sub>3</sub> thermal spray coating ESC

- Low metal contamination with high purity raw material
- High density film with our original spray coating technology
- Lower price compared with ceramics bulk ESC
- Longer life time compared with other film ESC



Al<sub>2</sub>O<sub>3</sub> spray coated ESC on Al pedestal

## **Business headquarters**

10th, Ryoka Bldg,  
6-2 Nihonbashi-muromachi 4-chome, Chuo-ku, Tokyo103-0022 Japan  
TEL: +81-3-3271-5061 Fax: +81-3-3271-5062  
Mail: nc-sales@niterragroup.com

This content is reference. And, it has a possibility to change the contents without your information.

Limitation of copy and reprint