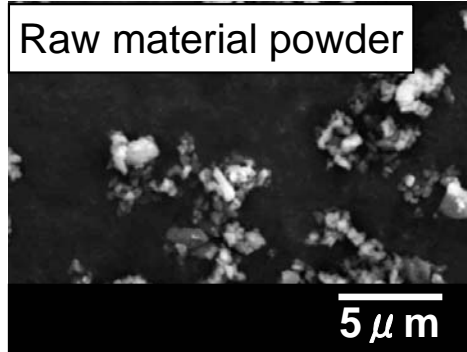


# Ceramic Manufacturing : Powder processing

Raw material



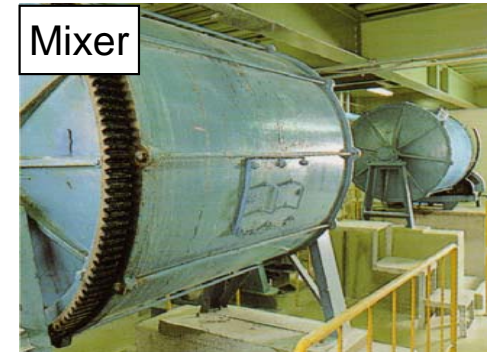
Grain size is less than 1 μm.  
(1 μm =  $\frac{1}{1000}$  mm)



Grinding/Mixing

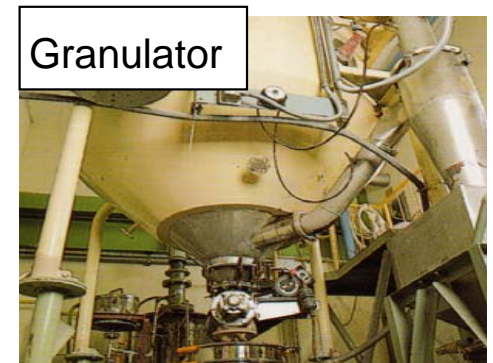
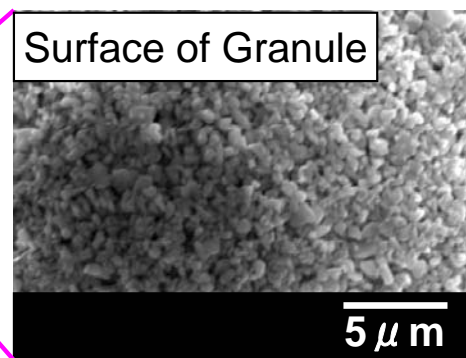
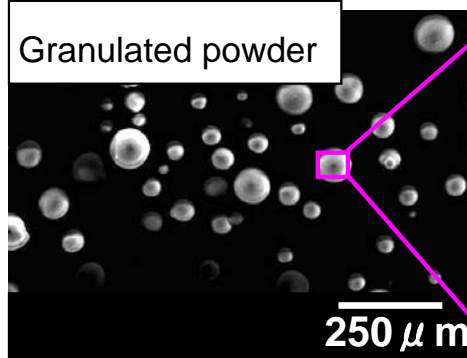


Granulated spherical powder of about 100 μm is made from fine powder.



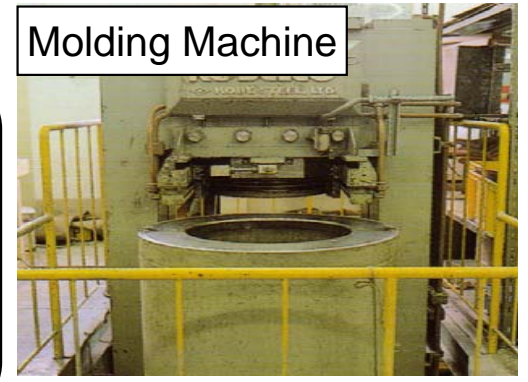
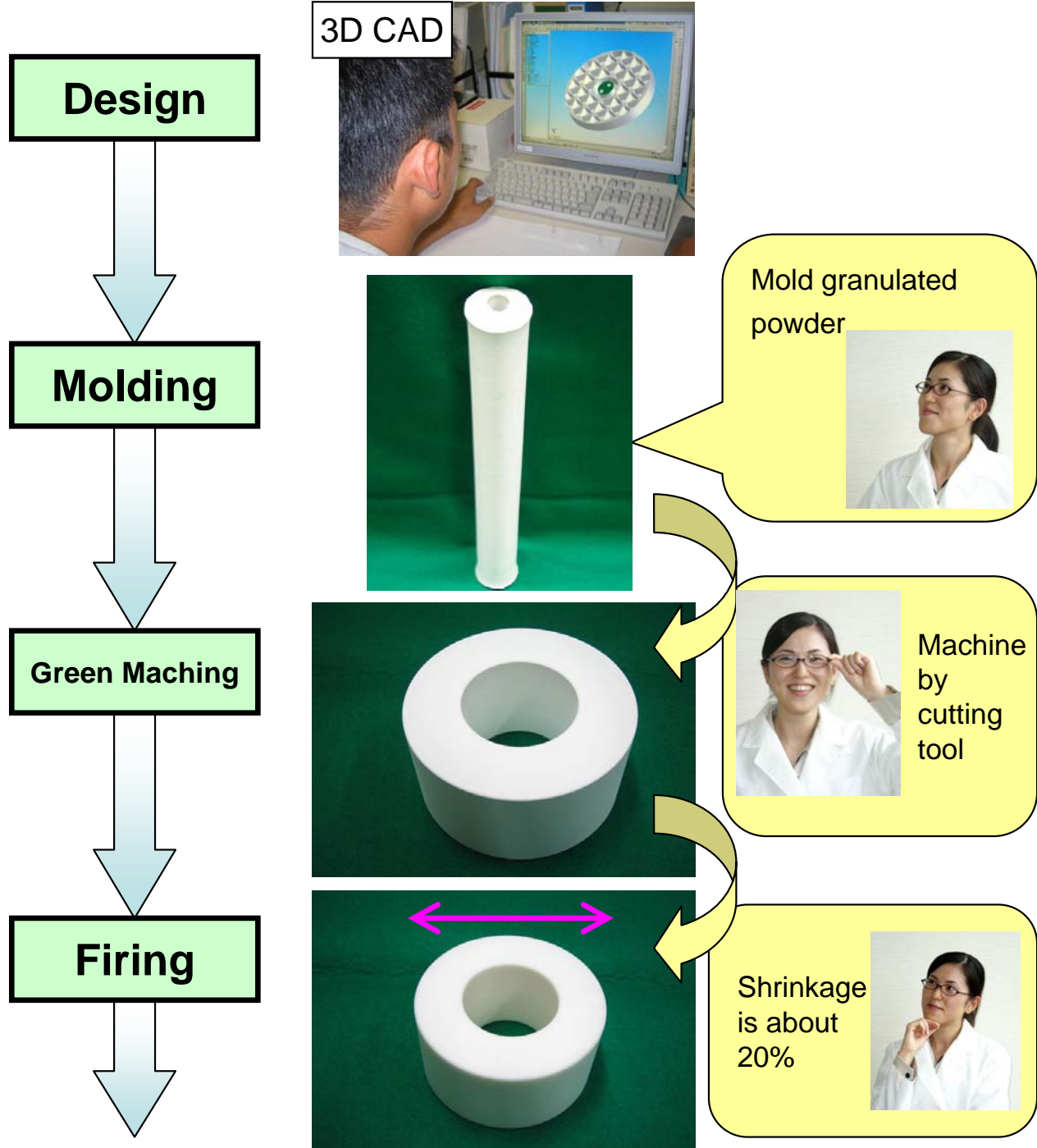
Mixer

Granulation

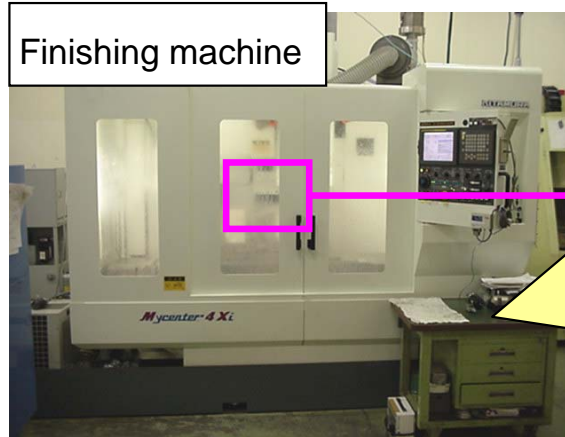
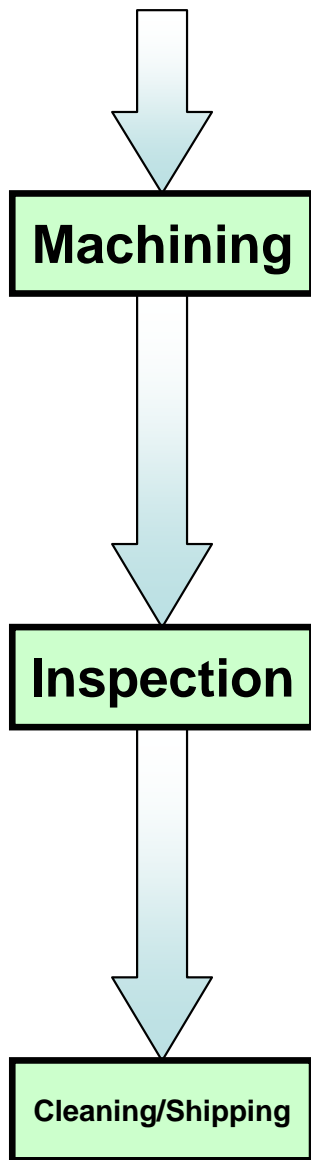


Granulator

# Ceramic Manufacturing: Before firing



# Ceramic Manufacturing :After firing



It was Machined by diamond tooling



Measure precision by various method

